

WARNING

Buyer/User assumes all responsibility for safety and proper use not in accordance with the directions and safety labels.



ViaAqua® Multi-Duty Pond Pump™

- High water flow
- Energy efficient
- Directional vortex impeller
- Thermally protected
- Easy to install and maintain
- Encapsulated pre-filter
- Fountain head kits included
- For freshwater environments



MULTI-DUTY POND PUMP

The ViaAqua® Multi-Duty Pond Pump™ is a high performance garden water pump ideal for ponds, large fountains, waterfalls, streams and external filtration. It uses a large debris strainer that fully encapsulates the pump to prevent water flow blockage. The sophisticated design makes installation and maintenance very easy. The ViaAqua® Multi-Duty Pond Pump™ includes complete fountain head kits and attachments to operate the pump submersibly.



WARNING AND SAFEGUARD

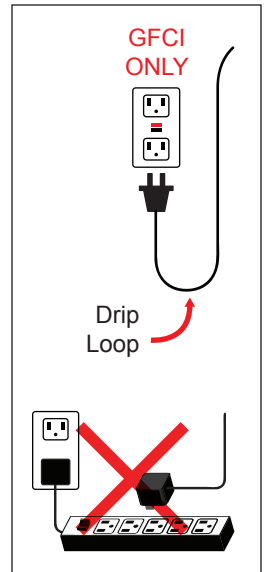
WARNING

- » This product may contain chemicals known to the State of California to cause cancer and/or birth defects or other reproductive harm. Wash your hand after handling the product.
- » It is your sole responsibility to verify that the plug and receptacle are clean/free of moisture and salt build up at all times. The receptacle must be free of water, salt, calcium, and magnesium. Failure to do so may cause fire and/or loss of life.
- » Do not plug into an extension cord or power strip.
- » A drip loop must be used when plug into any electrical devices. A drip loop is part of the cord hanging below the receptacle.
- » The national code requires all aquarium equipment to be plugged into a G.F.C.I. (Ground Fault Circuit Interrupter) electrical outlet. If you do not have a G.F.C.I., have an electrician install one prior to operating any aquarium components.

1. Read and follow all instructions before using the ViaAqua® Multi-Duty Pond Pump™ to ensure proper use and application.
2. Use this product for its intended use only.
3. Do not operate the ViaAqua® Multi-Duty Pond Pump™ without being submersed in water at all times or permanent damage may be caused to the pump.
4. Prior to maintenance on any electrical aquarium appliance or aquarium, you must disconnect all electrical aquarium devices.
5. Never operate the ViaAqua® Multi-Duty Pond Pump™ with an electronic wavemaker or an on/off timing device. Such devices will cause permanent damage to the pump and/or demagnetize the impeller.
6. Routine maintenance is required to ensure the maximum performance and the longevity of the ViaAqua® Multi-Duty Pond Pump™. See maintenance guidelines.
7. The use of a surge suppressor is strongly recommended.
8. Verify that the pump size is appropriate for your specific application without dramatically

restricting the water flow. Consult with your local dealer or manufacturer's guidelines for the pump size needed for your specific application.

9. Do not reduce the input or output diameter of the pump.
10. Do not reduce the intake or output tubing size.
11. You must incorporate the pre-filter when operation is for water circulation, waterfalls, ponds and fountains.
12. Replace the impeller if there are any signs of damage or excess wear.
13. Failure to maintain the ViaAqua® Multi-Duty Pond Pump™ will cause permanent damage to the impeller and/or pump. Routine maintenance is of the utmost importance to keep your pump working well.
14. Never yank/pull the pump by the cord. This will cause the pump to fail prematurely and/or cause electrical shock.
15. Due to the extreme conditions of the pond environment, frequent cleaning of the pre-filter and pump is required. The pump will fail prematurely if the intake becomes clogged.
16. You must verify that the G.F.C.I. electrical outlet is free of water, calcium and magnesium deposits and/or moisture at all times. This will cause electrical arcing resulting in fire or electrical shock.
17. When operating the ViaAqua® Multi-Duty Pond Pump™ inside a pond or a fountain, a large pre-filter must be used. Failure to use the pre-filter will cause damage to the impeller and/or pump.

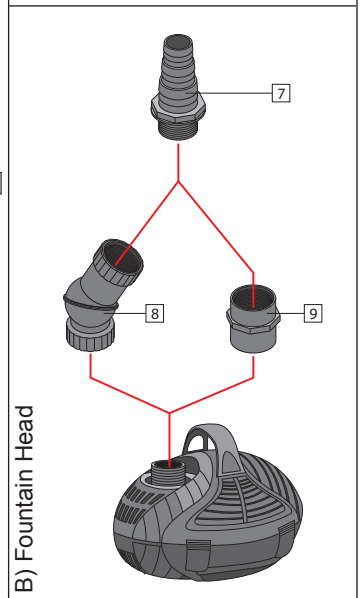
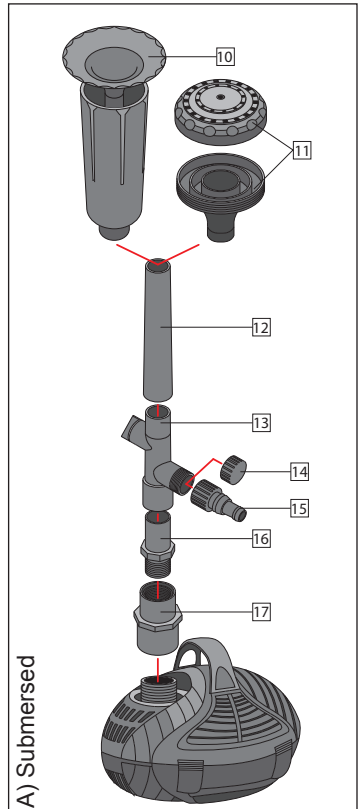
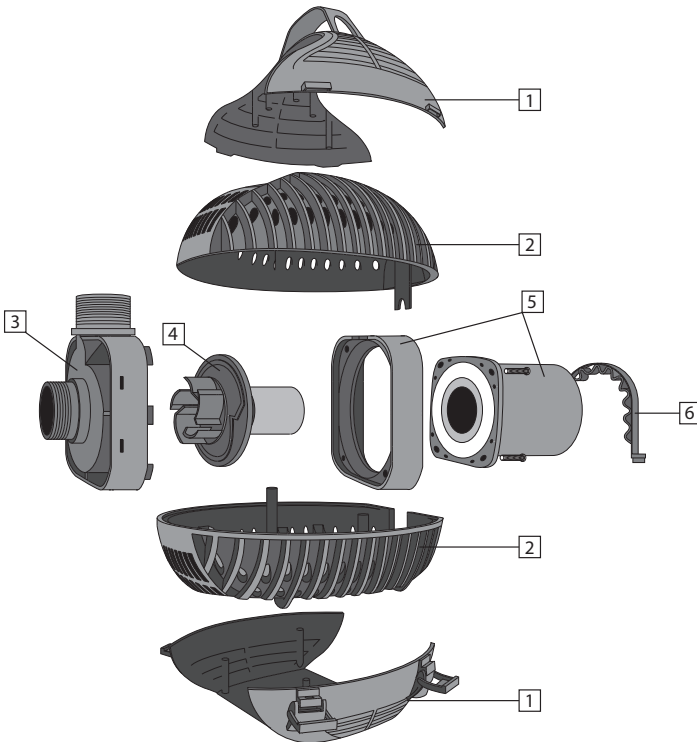


TIPS

- *Read and follow all the safeguards and safety guidelines for proper use of the product.*
- *Since there are many brand of filtration systems, please refer to particular manufacture instructions for installation and maintenance guidelines.*
- *The diverter valve enables water flow to be directed for either a water features, a Terminator™ UVC Sterilizer, or a pond filter.*

PART LIST

1. Locking pre-filter
2. Main pre-filter
3. Volute
4. Impeller
5. Motor
6. C-clamp
7. Barbed pipe adapter
8. Universal elbow
9. Coupler
10. Water bell head
11. Three tier head
12. Uplift tubes (3)
13. Valve and water diverter
14. Diverter cap
15. Barbed flexible adapter
16. 1 1/4" threaded pump to uplift tubes adapter
17. Fountain head coupler



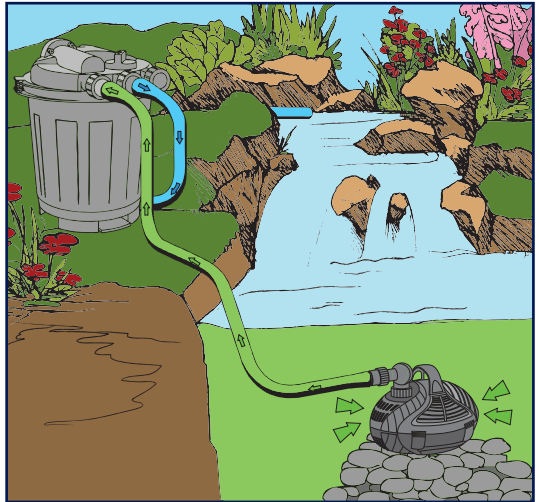
INSTALLATION SETUP

A) SUBMERSED

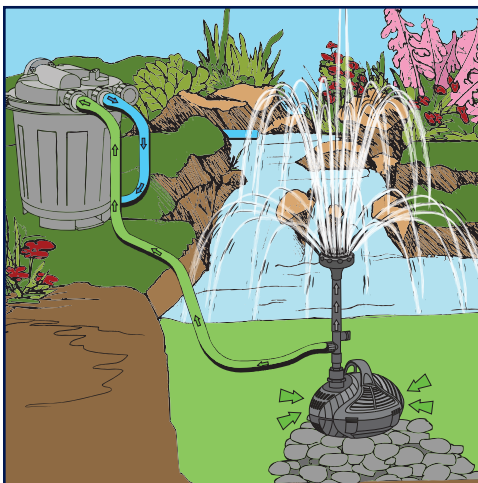
1. Place pump in the desired location. *If pump is placed in a pond, raise the pump off the bottom of the pond by a minimum of 6 inches.*
2. Use Teflon tape to connect the universal elbow or coupler to the output of the pump.
3. Place the o-ring onto the barbed pipe adapter. Then, use the Teflon tape to hand tighten the barbed pipe adapter to the universal elbow or coupler. See diagram A.
4. Connect the flexible tubing to the barbed pipe adapter. Ensure water tightness with a hose clamp.
5. Connect to filtration or water feature.

B) FOUNTAIN HEAD

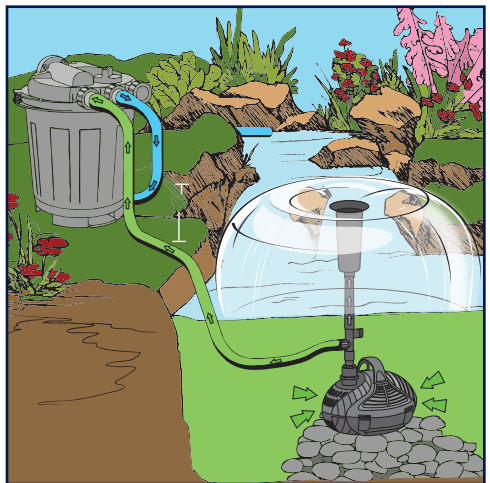
1. Place pump in the desired location. *If pump is placed in a pond, raise the pump off the bottom of the pond by a minimum of 6 inches.*
2. Use Teflon tape to connect the universal elbow or coupler to the output of the pump.
3. Install the fountain head properly. See details in diagram B.
4. The diverter valve enables water flow to be directed to either a water feature, Terminator™ UVC Sterilizer, or a pressure pond filter.



SUBMERSED



FOUNTAIN HEAD: THREE TIER



FOUNTAIN HEAD: WATER BELL

MAINTENANCE

If water decreases, it is a clear sign that debris is in the impeller or the pre-filter is clogged. It is the aquarist's sole responsibility to ensure the pump is maintained. Failure to properly maintain the pump will cause permanent damage to the pump.

- **Recommended routine maintenance: every 30 days.**
- **Tools required: Philips screw driver.**

1. Disconnect the pump from the GFCI (Ground Fault Circuit Interrupter) power supply prior to removing the pump from the water.
2. Release all four latches from the pre-filter. Rinse all the debris out of the pre-filter.
3. Remove the C-clamp.
4. Loosen the four large screws on the volute. Then, remove the volute.
5. Once the volute is removed, clean it well.
6. Remove the impeller and clean it well. Verify the impeller is free of all dirt and debris.
7. Once cleaned, place the impeller back into the motor. Guide holes on the impeller plate, so they match with the pins on the volute. The impeller should sit flush on the volute.
8. Reassemble. If necessary add a small amount of silicone lubricant to the gasket in the volute to ensure a proper seal.
9. Start the ViaAqua® Multi-Duty Pond Pump™ .

REPLACEMENT PARTS

Part List	Replacement Parts	UPC #0069037
10-17	Fountain head kits-large	2588 0
4	Impeller	TBA

SPECIFICATIONS OF VIAAQUA® PRESSURE POND FILTER™

Model	Recommended Pump Size Gallon per hour	UV Wattage	ID Pipe Size Size Required	Filtering Capacity	Filter Height	UPC #0069037
EF-3000	700-1300 GPH	-	1.25 in. or 1.5 in.	15.5 L	14.25 in.	2952 9
EF-3000 UVC		5 watt				2953 6
EF-4000	1300-2100 GPH	-		21.5 L	18.25 in.	2954 3
EF-4000 UVC		9 watt				2955 0
EF-5000	1300-3000 GPH	-		27.5 L	22.25 in.	2956 7
EF-5000 UVC		9 watt				2957 4
EF-6000	1300-4000 GPH	-		33.5 L	26.25 in.	2958 1
EF-6000 UVC		9 watt				2958 8

SPECIFICATIONS OF VIAAQUA® MULTI-DUTY POND PUMP™

Model	Qmax Liter per hour	Qmax Gallon per Hour	Hmax meter	Watt	Max. Head	Voltage/ Frequency	UPC #0069037
DP-5000	5000 LPH	1320 GPH	2 m	55 w	5.2 ft.	110-120v 60 Hz	TBA
DP-7000	6500 LPH	1716 GPH	2.5 m	70 w	6.56 ft.		TBA
DP-9000	7500 LPH	1980 GPH	3 m	80 w	8.85 ft.		TBA
DP-12000	10500 LPH	2772 GPH	5 m	130 w	13.12 ft.		TBA
DP-15000	12500 LPH	3300 GPH	5.5 m	180 w	14.76 ft.		TBA
DP-18000	14500 LPH	3828 GPH	6.5 m	250 w	21 ft.		2966 6
DP-20000	16500 LPH	4356 GPH	7 m	350 w	23 ft.		TBA

LIMITED WARRANTY

Commodity Axis, Inc.® warrants that the ViaAqua® Multi-Duty Pond Pump is free from defects for a period of one year from the initial date of purchase shown on the original cash register receipt. Commodity Axis, Inc.® disclaim all other warranties, express or implied, including but not limited to any implied warranties of merchantability and/or fitness for a particular purpose. Although this limited warranty gives you specific rights, you may have other rights which vary from state to state. This warranty is void if the failure is due to misuse, tampering, negligence, abuse, accident and/or submersion, a failure to properly install, maintain, clean, prefilter, reassemble, and/or use the ViaAqua® Multi-Duty Pond Pump with a Ground Fault Circuit Interrupter (GFCI).

CONSUMER REMEDIES

Commodity Axis, Inc.'s entire liability and your sole and exclusive remedy shall be either repair or replacement of the ViaAqua® Multi-Duty Pond Pump only if you return the defective unit directly to Commodity Axis, Inc.® with the original receipt in its original box along with fifteen dollars (\$15.00) for shipping and handling. Do not send the ViaAqua® Multi-Duty Pond Pump by insured mail. You may send your returns or replacements by UPS if requiring a signature upon arrival. Any replaced unit will be warranted for the remaining time of the original warranty period. In no event shall any shipping charges be reimbursed. In no event will Commodity Axis, Inc.® be liable for any consequential or incidental damages, including but not limited to lost sea life, personal injury, property damage, equipment damage, lost profits, lost wages, lost savings, lost income, etc., arising out of the use of the ViaAqua® Multi-Duty Pond Pump. Some states do not allow for the limitation or exclusion of liability for incidental or consequential damages, so the above exclusion may not apply to you.

REGISTRATION CARD

ONE (1) YEAR WARRANTY

Name		Date
Address		
City	State	Zip Code
Country	Home Phone	
Cell Phone	Email	
Date of Purchase	Seller (Retail Name)	
Seller's Location		Phone

*Affix a copy of your original purchase receipt here. Please mail warranty card and proof of purchase within 15 days of purchase to:

Commodity Axis® Inc., 300 South Lewis Rd. Unit J. Camarillo CA 93012

IMPORTANT: Please make a copy of this warranty card and retain it for your records. Warranty policy is subject to change without notice.



COMMODITYAXIS®
C O M M O D I T Y A X I S I N C

Bringing Products to Life
300 South Lewis Rd. Unit J. Camarillo CA 93012
Fax: (888) 989 0878
www.ViaAquaOceanpure.com