

NOTE: Please send all warranty Card to our new address

**300 South Lewis Rd. Unit J.
Camarillo, CA 93012**

WARNING!



***Buyer/user assumes all responsibility for
safety and proper use not in accordance
with the directions and safety labels.***

ViaAqua®

CUBE STAR



FEATURES

- Panoramic bow front with 4 versatile filtration chambers
- 72 watts (3x 24 watts) PL Lamps powered by a UL listed Fulham ballast
- Dual cooling fans
- Dual blue LED moonlights
- Removable micron filter bag
- 5 stage filtration system:
 1. **Mechanical:** Micron filter bag.
 2. **Chemical:** Activated carbon or resin filtration media.
 3. **Biological:** Ceramic bio media.
 4. **Protein skimmer:** Integrated air driven counter current skimmer.
 5. **UV sterilizer:** 5 watts PL UV bulb with a quartz sleeve (*UV model ONLY*)

Filtration layout



UV sterilizer model:

1. UV sterilizer and return pump
2. Heater or bio media
3. Collection cup and micro filter bag
4. Protein skimmer



Standard model:

1. Return pump
2. Heater or bio media
3. Collection cup and micro filter bag
4. Protein skimmer

SPECIFICATION

Cube star aquarium						
Model #	Color	Description			UPC # 0069037	
		Size (approx.)	Dimension (L x W x H) (approx.)	light bulbs		Pump Model
CS-15B	Black	15 Gal.	15.5 x 17.75 x 20in	3x 24w	VA820 (13w)	3012 9
CS-15S	Silver			3x 24w		3013 6
CS-15B-UV	Black		15.5 x 17.75 x 20in with 5 watt UV sterilizer	3x 24w		3014 3
CC-15S-UV	Silver			3x 24w		3015 0
CS-28B	Black	28 Gal	22 x 23.75 x 23.25in	3x 36w	VA305 (18w)	TBA
CS-28S	Silver			3x 36w		TBA
CS-28B-UV	Black		22 x 23.75 x 23.25in with 5 watt UV sterilizer	3x 36w		TBA
CC-28S-UV	Silver			3x 36w		TBA
Cube star stand (sold separately)						
Model #	Color	Aquarium model	Dimension (L x W x H) (approx.)	UPC # 0069037		
CS-15KD-B	Black	CS-15B / CS-15B-UV	15.5 x 17.75 x 30in	3016 7		
CS-15KD-S	Silver	CS-15S / CS-15S-UV		3017 4		
CS-28KD-B	Black	CS-28B / CS-28B-UV	22 x 23.75 x 30in	TBA		
CS-28KD-S	Silver	CS-28S / CS-28S-UV		TBA		

PART LIST

1. Light hood
2. Led moonlight on/off switch
3. PL lamp on/off switch
4. Feeding door
5. 24 watts linear PL lamps
6. Dual blue Led moonlights
7. Splash guard
8. Dual cooling fans
9. Light hood hinge
10. Filter

11. Aquarium
12. Intake strainers
13. Counter current skimmer
 - 13a. skimmer discharge elbow
 - 13b. Main body
 - 13c. Wood airstone
 - 13d. Airline tubing & control valve
 - 13e. Suction cup bracket
 - 13f. Air pump

14. Collection tray
 15. Micron filter bag
 16. Directional discharge
 17. Directional discharge adapter
 18. Clear discharge tube
 19. Return pump
 20. Discharge elbow
- (ONLY in CS-15B and CS-15S)

21. Terminator 5 watts UV sterilizer
 - 21a. 5 watts UV bulb
 - 21b. Reaction chamber with quartz sleeve
 - 21c. Hangers
 - 21d. Ballast

NOTE: all Part No. 21 is available ONLY in CS-15B-UV and CS-15S-UV



2



3

WARNING AND SAFEGUARDS

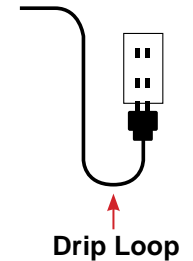
Before installing Cube Star read and follow all warnings and safeguards and to guard against injury, basic safety precautions need to be observed.

- Read and follow all warning and instructions.
- The national code requires that a ground fault circuit interrupter (GFCI) be used in the branch circuit that is supplying power to any aquarium device.
- The aquarium must be placed on a strong and level aquarium stand.
- If the light hood is to fall into the water or is sitting in water do not reach for it. Unplug the light fixture first then retrieve and/or remove. If the light is to get wet unplug immediately.
- Do not operate if any of the electrical cords are damaged.
- Always unplug all electrical devices prior to working on the aquarium, light and/or filter.
- Never yank or pull the cord from the electrical outlet.
- Only use the aquarium for it intended use.
- Do not lift the aquarium by the frame.
- Do not lift or move aquarium with water in unit.
- Do not operate the pump without water.
- Close supervision is necessary when the aquarium is worked on by or near children.
- All components are intended for indoor household use only.
- Do not plug into an extension cord.
- Important to keep the light hood clean and free of moisture and salt deposits at all times. Always unplug the light hood prior to performing maintenance or cleaning of the exterior of the hood.

WARNINGS

UV Lamp: The UV lamp used in this unit produces harmful ultraviolet radiation. Never look directly at the lamp as damage to eyes will occur. Always disconnect the power supply before opening the unit for service. Failure to do so will expose the user to harmful UV radiation.

Drip loop: A Drip Loop must be used when plugging in all electrical aquarium devices. The Drip Loop is that part of the cord which hangs below the level of the receptacle. See Diagram.



IMPORTANT

It is your sole responsibility to verify that the receptacle is clean and free of moisture at all times. The receptacle must be free of water, salt, calcium and magnesium failure to do will cause a fire and/or loss of life.

Having a well-maintained and established aquarium in the house or office provides a soothing and tranquil feeling for all. It is known that aquariums and fish help reduce stress and anxiety. A child's love for fish can be used to teach responsibility as well as basic biology.

The following are some helpful hints as well as specific guidelines to set up and maintain an aquarium. These are guidelines and cannot account for every variable in owning and/or taking care of an aquarium with live animals. We recommend that when having any questions always consult you local tropical fish store or pet supply store.

Do not deviate from the safeguards, warning and/or safety guidelines

DIRECTION FOR INSTALLATION

Required tools: Flat head screw driver.

NOTE: When adding water to the aquariums don't use any water conditioners that contain polymers. It is recommended to use RO water with synthetic sea salt or buy salt pre-made from your local fish store. If water conditioners with polymers are used the skimmer will not work properly until it is removed from the water.

I - CHECK FOR LEAKS

On a perfectly flat level surface fill the aquarium with water to verify that there are not any leaks. Now that there are not any leaks remove the water from the aquarium. Never lift the aquarium with water either scoop or siphon water from the aquarium.

II - AQUARIUM LOCATION

1. Do not put the aquarium directly in the front of a window.
2. Do not put the aquarium next to a door that leads to the outside. Any consistent draft will make it very difficult to maintain a stable temperature.
3. Find a leveled surface to place the stand and aquarium. If you are not placing the aquarium on an aquarium stand verify that the surface is flat, level and strong.
NOTE: Water weights approximately 8 pounds per gallon.
4. Make sure no part of the aquarium hanging off the stand
5. Position the aquarium a minimum of 4.8" (12cm) from the wall.
6. Keep out of reach of children.

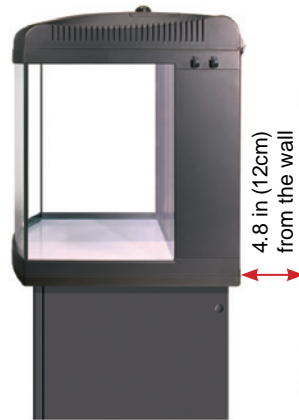


Fig. 1

III - ELECTRICAL SUPPLY

1. Plug in all electrical aquarium appliances directly into a GFCI electrical outlet only!
2. Do not plug into a extension cord.
3. Do not plug in the pump until the aquarium is full of water.
4. Always disconnect the power to all aquarium devices prior to maintenance.

IV - FILTRATION SET UP

Open canopy and light fixture (Fig. 2).

A. Installation of micro filter bag, collection cup & Protein skimmer

1. Install micron filter bag. The clasp will attach to the left side of the filter chamber (Fig. 3).
2. Rinse the protein skimmer with hot water and install suction cup bracket (Fig. 4).



Fig. 2



Fig. 3



Fig. 4

3. Position the skimmer in the first chamber so the suction cups face the left side of the filter. Verify the airline tubing is accessible (Fig. 5).
4. Verify the salinity is 10.021-10.025.
5. Connect a small piece of tubing to the air pump (Fig. 6).
6. Connect the inline air control valve (Fig. 7).
7. Collection tray goes directly over the micron filter (Fig. 8).



Fig. 5

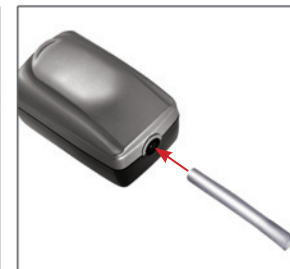


Fig. 6

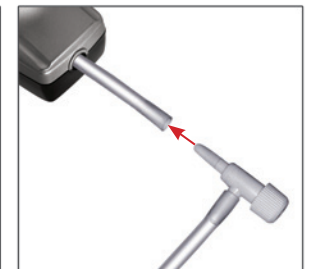


Fig. 7

8. Reinstall skimmer so that the skimmer discharge is touching the collection tray (Fig. 9).
9. Using the air control valve adjust bubbles are about 3/4"-1 1/4" below discharge elbow.

Helpful hints for protein skimmer (see Troubleshooting in page 12)



Fig. 8



Fig. 9

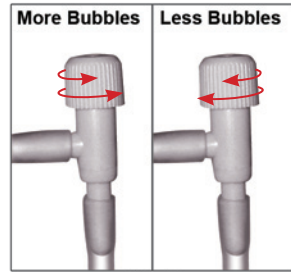


Fig. 10



Fig. 11

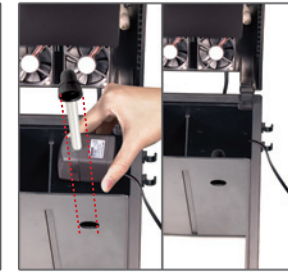


Fig. 12

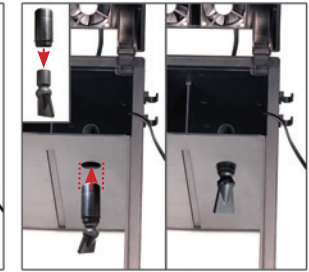


Fig. 13

B. Installation of heater or bio media chamber/carbon

1. Install the proper wattage heater securing with suction cups.
2. Add bio media and or carbon. All media needs to be secured in a media bag.

C. Installation of water pump and UV sterilizer

NOTE: Skip step C and to go step D for tank with no UV Sterilizer

1. Attach the clear discharge tube to the return pump output (Fig. 11).
2. Connect the UV chamber directly to the discharge tube (Fig. 11).
3. Slide the completed pump assembly into the chamber and align the discharge of the UV chamber with discharge port of the filter (Fig. 12).
4. Attach the directional discharge to adapter (Fig. 13).
5. Insert the directional discharge with adapter through filter wall into the UV chamber (Fig. 13).

V - DECORATING THE TANK

1. Add substrate. Verify that the sand or gravel is well rinsed.
2. Add decorations and/or live rock.
3. Add water.

NOTE: When adding water to the aquariums don't use any water conditioners that contain polymers. It is recommended to use RO water with synthetic sea salt or buy salt pre-made from you local fish store. If water conditioners with polymers are used the skimmer will not work properly until it is removed from the water.

VI - FINAL STEP

1. Remove the light hood by placing a flat head screw driver just below the light hood hinge and rotate (Fig. 17 and 18). Position all power cord to the back of the tank and reinstall (Fig 19).
2. Verify the water level is at or above the top intake strainer.
3. Plug water pump directly to a GFCI electrical outlet.
4. Plug in the remaining electrical aquarium device directly into a GFCI outlet.
5. Verify that there are not any leaks.

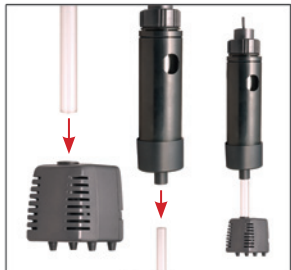


Fig. 14

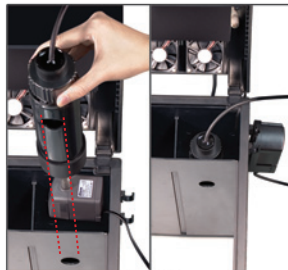


Fig. 15



Fig. 16

D. Installation of water pump

1. Attach the clear discharge tube to the return pump output (Fig. 14).
2. Connect the discharge elbow directly to the discharge tube (Fig.14)
3. Slide the completed pump assembly into the chamber and align the discharge elbow with discharge port of the filter (Fig.15).
4. Attach the directional discharge to adapter (Fig.16)
5. Insert directional discharge with adapter through filter wall into the discharge elbow (Fig. 16)

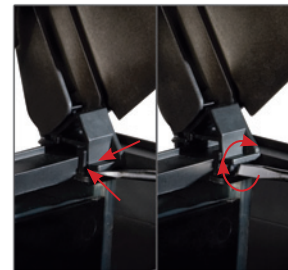


Fig. 17

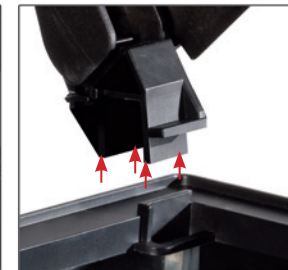


Fig. 18



Fig. 19

MAINTENANCE

CAUTION: Disconnect from electrical outlet prior to servicing the aquarium.

WATER PUMP

NOTE: To ensure a properly operating pump: Clean pump, impeller and intake strainer every 3 weeks. Failure to do so will cause premature failure of the pump.

1. Disconnect the pump from power supply prior to remove the pump from water.
2. Remove the impeller well cover.
3. Once the impeller well cover is removed, slide both the impeller and shaft out of the main body of the pump and clean well. Please not do not use any soap detergents during cleaning.
4. After the impeller and shaft are cleaned, use a small brush to clean inside of the motor housing.
5. Reassemble above parts and your ViaAqua® pump is again ready to use. Confirm that all the washer and bushing a reassembled properly. Failure to do so will cause permanent damage to the pump.

UV STERILIZER

NOTE: The PL ultraviolet bulb needs to be replaced every 8,000-9,000 hours. This will ensure optimum performance. Replacement quartz sleeves and quartz bulbs are available at your independent dealer.

1. Follow all safeguards and warnings.
2. Disconnect from electrical outlet prior to servicing the aquarium .
3. Unscrew the threaded PL bulb cap on the end of the ultraviolet sterilizer. Once unscrewed the inside of the cap will reveal the PL light bulb socket.
4. Remove the PL ultraviolet bulb from the box. **Important: Do not touch the quartz part of the bulb.** If needed use a clean clothe to handle the bulb.
5. Align the pins with the holes in the bulb socket. Press the bulb directly into the holes in the bulb socket. Avoid all angle failure to do so may cause permanent damage to the bulb and/or the bulb socket.
6. Screw cap back onto the UV sterilizer.

PROTEIN SKIMMER

1. Disconnect from electrical outlet prior to servicing the aquarium.
2. Change wood airstone as needed. If bubbles decrease or increase in size replace airstone.
3. Clean the discharge elbow and collection cup at least once a week.

LIGHT HOOD

- **Replace light bulbs every 9-12 months.**
- **Keep the hood clean and free all salt deposits at all times.**
- **To ensure maximum light penetration keep splash guard clean.**
- **Fans must be cleaned and maintained as needed.**

To remove bulbs and clean splash guard:

1. Disconnect from electrical outlet prior to servicing the aquarium.
2. Remove all four screws securing the splash guard (Fig. 20).
3. Remove splash guard and gasket (Fig. 20).
4. Remove silicone bands (Fig. 21).
5. Clean and/or replace bulbs (Fig. 22).
6. If replacing bulbs replace with ONLY 24 watts linear pin PL bulbs.
7. Replace gasket.
8. Replace splash guard and screws.



Fig. 20



Fig. 21



Fig. 22

TECHNICAL SERVICE DEPARTMENT
Monday to Friday 9 am - 5 pm PST
(805) 383-3566 ext. 102.
e-mail: info@commodityaxis.com

TROUBLESHOOTING

PROBLEM: Nothing will collect in the collection cup

Reasons and solutions:

1. There is not a biological load.
2. The salinity is too low adjust to 10.021-10.025.
3. Increase air volume.
4. It may take up to 24 hours for a skimmer to start to work. Set up and wait without any adjustments.

- The foam is unable to climb into the collection cup due to oils from your hands, lotions, tank additives and/or foods feed. Run carbon filter to remove any impurities.
- Remove the collection cup and wash well with a mild detergent and rinse with hot water. Insure all the detergent is removed from the collection cup. Replace collection cup.

PROBLEM: Only water will collect in the collection cup

Reasons and solutions:

- The salinity is too high. Adjust salinity to 1.018-1.023.
- The use of additives such as water conditioners, medications, red slime remover and or use of synthetic sea salt are causing the bubbles to bond longer thus the water in the cup. As collection cup fills dump water and repeat until skimmer is working properly. The problem will persist until the agent causing the problem.
- Decrease air volume.

REPLACEMENT PARTS

Part No.	Description	UPC # 0069037
15	VA 2600 needle wheel impeller shaft	2984 0

LIMITED WARRANTY


Commodity Axis, Inc.® warrants that the ViaAqua® Cube Star is free from defects for a period of one year from the initial date of purchase shown on the original cash register receipt. Commodity Axis, Inc.® disclaims all other warranties, express or implied, including but not limited to any implied warranties of merchantability and/or fitness for a particular purpose. Although this limited warranty gives you specific rights, you may have other rights which vary from state to state. This warranty is void if the failure is due to misuse, tampering, negligence, abuse, accident and/or submersion, a failure to properly install, maintain, clean, prefilter, reassemble, and/or failure to use the ViaAqua® Cube Star with a Ground Fault Circuit Interrupter (GFCI).

CONSUMER REMEDIES

Commodity Axis, Inc.®'s entire liability and your sole and exclusive remedy shall be either repair or replacement of the ViaAqua® Cube Star only if you return the defective unit directly to Commodity Axis, Inc.® with the original receipt in its original box along with twenty five dollars (\$25.00) for shipping and handling. Do not send the ViaAqua® Cube Star by insured mail. You may send your returns or replacements by UPS if requiring a signature upon arrival. Any replaced unit will be warranted for the remaining time of the original warranty period. In no event shall any shipping charges be reimbursed. In no event will Commodity Axis, Inc.® be liable for any consequential or incidental damages, including but not limited to, loss of sea life, personal injury, property damage, equipment damage, lost profits, lost wages, lost savings, lost income, etc., arising out of the use of the ViaAqua® Cube Star. Some states do not allow for the limitation or exclusion of liability for incidental or consequential damages, so the above exclusion may not apply to you.

RETURNS

Please contact our service center at (888) 838-3882 or fax (888) 989-0878 to arrange repair and/or replacement. Please allow 4-6 weeks for all returns. Commodity Axis, Inc.® cannot ship nor respond to a P.O. Box address.

WARRANTY CARD	
Please mail warranty card and PROOF OF PURCHASE within 15 days of purchase to: Commodity Axis, Inc., P.O. Box 1210, Camarillo, CA 93011-1210.	
Model #:	Customer's Name:
Date of Purchase:	Address:
Dealer Name:	Phone #:
	



P.O. Box 1210, Camarillo, CA 93011-1210
www.commodityaxis.com, www.viaaqua.net
www.oceanpuresalt.com

Commodity Axis, Inc.® is also a manufacture of
ViaAqua® Acro-Cal™ Reactor, ViaAqua® Poly Reactor™, ViaAqua® Pressure Pond Filters,
ViaAqua® Oceanpure™ Salt, ViaAqua® Heaters, ViaAqua® Skimmers, ViaAqua® MillionAir™
Air Pump, ViaAqua® Water Pumps, ViaAqua® Aquariums and Helios® Lighting Systems.

© 2009 Commodity Axis, Inc.®
Specifications are subject to change without notice